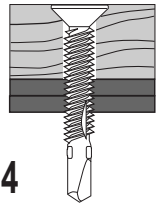




FLAT SELF-DRILLING WINGED REAMER

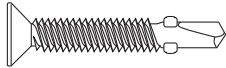
Plywood to steel.



ES ER 5454



REDUCED PHILLIPS #2

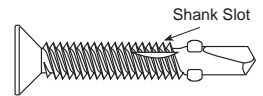


PF10158

Product Specifications



REDUCED PHILLIPS #3



#12 and #14 Diameter

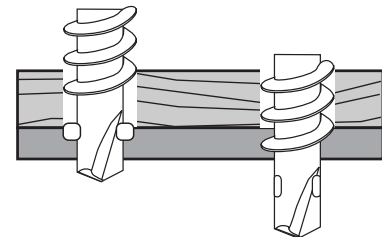
Part #	Dia.	Length	TPI	Bulk Qty	Finish	Corrosion	Recess	Drill Point	Head Dia.
PF10158	10	1-5/8	24	3M	Zinc	24 hrs. min. B-117	#2 Phillips	#2	8.64-9.77 mm
PF12200	12	2	24	2M	Zinc	24 hrs. min. B-117	#3 Phillips	#3	9.88-11.1 mm
PF12212	12	2-1/2	24	1M	Zinc	24 hrs. min. B-117	#3 Phillips	#3	9.88-11.1 mm
PF14234	14	2-3/4	20	1M	Zinc	24 hrs. min. B-117	#3 Phillips	#4	11.5-12.9 mm
PF14314	14	3-1/4	20	1M	Zinc	24 hrs. min. B-117	#3 Phillips	#4	11.5-12.9 mm

Pro-Twist Darts® Meet or Exceed ASTM C-1513

Dia.	Nominal Screw Dia. (in)	Metal Gauge 1 (Lb)	Tension (Pull) Lbs 1 pc	Minimum Torsional Strength (Lb)
10	0.190	20	389	61
		18	554	
		16	727	
		14	1050	
		12	1216	
12	0.216	16	528	92
		14	778	
		12	1120	
		.156"	2118	
		.187"	2350	
1/4"	0.250	16	601	150
		14	896	
		12	1445	
		.156"	2500	
		.187"	3520	
		.218"	4115	

Use Winged Reamers to attach 1/2" or greater wood to 18 ga. or thicker steel.

Purpose of Wings: to prevent "Jacking Action"



Wings ream hole larger than threads so threads will not engage wood.

Wings break off when they hit steel, then threads engage.

Ultimate Value Charts

Screws driven into steel were driven with three exposed threads on the off side of the connection, then pulled out with testing machine.

Note that all results were obtained in strict adherence to ASTM test protocol. These ultimate figures are offered only as a guide and are not guaranteed in any way by PrimeSource Building Products. A 4:1 safety ratio is recommended.

Installation Guidelines

0-2500rpm Screwgun with torque adjustment - Overdriving may result in fastener failure or stripout of the work surface. The fastener is fully seated when the head's bearing surface is flush with the wood. The fastener must penetrate beyond the metal a minimum of three threads to comply with the code.

ALL PRIME SOURCE FASTENERS ARE MANUFACTURED IN AN ISO 9002 AND ISO 14001 CERTIFIED AND APPROVED FACTORY TO PRIME SOURCE PERFORMANCE SPECIFICATIONS AND PRINT DRAWINGS.