



BUILDING CODE COMPLIANCE OFFICE (BCCO)  
PRODUCT CONTROL DIVISION

MIAMI-DADE COUNTY, FLORIDA  
METRO-DADE FLAGLER BUILDING  
140 WEST FLAGLER STREET, SUITE 1603  
MIAMI, FLORIDA 33130-1563  
(305) 375-2901 FAX (305) 375-2908

**NOTICE OF ACCEPTANCE (NOA)**

[www.miamidade.gov/buldingcode](http://www.miamidade.gov/buldingcode)

**PrimeSource Building Products, Inc.**  
14516 Heathrow Forest Pkwy.  
Houston, TX 77032

**SCOPE:**

This NOA is being issued under the applicable rules and regulations governing the use of construction materials. The documentation submitted has been reviewed by Miami-Dade County Product Control Division and accepted by the Board of Rules and Appeals (BORA) to be used in Miami Dade County and other areas where allowed by the Authority Having Jurisdiction (AHJ)

This NOA shall not be valid after the expiration date stated below. The Miami-Dade County Product Control Division (In Miami Dade County) and/or the AHJ (in areas other than Miami Dade County) reserve the right to have this product or material tested for quality assurance purposes. If this product or material fails to perform in the accepted manner, the manufacturer will incur the expense of such testing and the AHJ may immediately revoke, modify, or suspend the use of such product or material within their jurisdiction. BORA reserves the right to revoke this acceptance, if it is determined by Miami-Dade County Product Control Division that this product or material fails to meet the requirements of the applicable building code.

This product is approved as described herein, and has been designed to comply with the Florida Building Code, including the High Velocity Hurricane Zone.

**DESCRIPTION: Pro-Twist Concrete Screws**

**APPROVAL DOCUMENT:** Drawing No.S-2624, Sheets 1 and 2 of 2, titled "Pro-Twist Concrete Screw Anchors" dated 01/17/06, with the last revision dated 08/03/07, prepared by R W Building Consultants, Inc., signed and sealed by Wendell W. Haney, P.E., bearing the Miami-Dade County Product Control approval stamp with the Notice of Acceptance (NOA) number and expiration date by the Miami-Dade County Product Control Division.

**MISSILE IMPACT RATING: None**

**LABELING:** Each Box shall bear a permanent label with the manufacturer's name or logo, city, state and the following statement: "Miami-Dade County Product Control Approved or MDCPCA", unless otherwise noted herein.

**RENEWAL** of this NOA shall be considered after a renewal application has been filed and there has been no change in the applicable building code negatively affecting the performance of this product.

**TERMINATION** of this NOA will occur after the expiration date or if there has been a revision or change in the materials, use, and/or manufacture of the product or process. Misuse of this NOA as an endorsement of any product, for sales, advertising or any other purposes shall automatically terminate this NOA. Failure to comply with any section of this NOA shall be cause for termination and removal of NOA.

**ADVERTISEMENT:** The NOA number preceded by the words Miami-Dade County, Florida, and followed by the expiration date may be displayed in advertising literature. If any portion of the NOA is displayed, then it shall be done in its entirety.

**INSPECTION:** A copy of this entire NOA shall be provided to the user by the manufacturer or its distributors and shall be available for inspection at the job site at the request of the Building Official. This NOA consists of this page 1, evidence page E-1 as well as approval document mentioned above.

The submitted documentation was reviewed by **Carlos M. Utrera, P.E.**



*Signature*  
9/7/07

NOA No 05-0526.03  
Expiration Date: October 4, 2012  
Approval Date: October 4, 2007  
Page 1

**PrimeSource Building Products, Inc.**

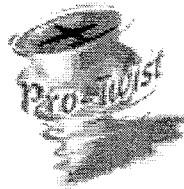
**NOTICE OF ACCEPTANCE: EVIDENCE PAGE**

- A. DRAWINGS**
1. Drawings No.S-2624, Sheets 1 and 2 of 1, titled "Pro-Twist Concrete Screw Anchors" dated 01/17/06, with the last revision dated 08/03/07, prepared by R W Building Consultants, Inc., signed and sealed by Wendell W. Haney, P.E.
- B. TEST**
1. Test report on Tension and Shear Strength of anchor in Concrete, per ASTM E488-90 and in wood, per ASTM D1761-90, prepared by Construction Testing Corporation, Report No. 06-010, dated 03/31/07, signed and sealed by Yamil G. Kuri, P.E.
- C. CALCULATIONS**
1. Anchors capacity calculations, prepared R W Building Consultants, Inc., dated 06/29/07 and 08/08/07, signed and sealed by Wendell W. Haney, P.E.
- D. QUALITY ASSURANCE**
1. Building Code Compliance Office (BCCO).
- E. MATERIAL CERTIFICATIONS**
1. Corrosion Resistance Test, per ASTM G-85, Annex 5, performed by Testing Evaluation Laboratories, Inc., Report No. TEL 05-0930-50, dated 09/30/05, signed by Vivian K. Wright, President.
- F. STATEMENTS**
1. Code compliance and no financial letter issued by R W Building Consultants, Inc., dated 09/07/07, signed and sealed by Wendell W. Haney, P.E.
  2. NOA request letter issued by PrimeSource Building Products, Inc., dated 02/08/05, signed by Scott G. Smith, Vice-President.



---

**Carlos M. Utrera, P.E.**  
**Product Control Examiner**  
**NOA No 05-0526.03**  
**Expiration Date: October 4, 2012**  
**Approval Date: October 4, 2007**



# PRIME SOURCE BUILDING PRODUCTS, INC.

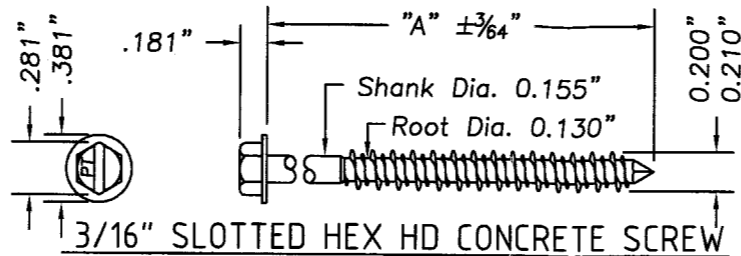
AN ITOCHU COMPANY

2115 E. BELTLINE ROAD, CARROLLTON, TX 75006  
TELEPHONE (281) 987-9806 FAX (281) 987-9846

## PRO-TWIST CONCRETE SCREWS

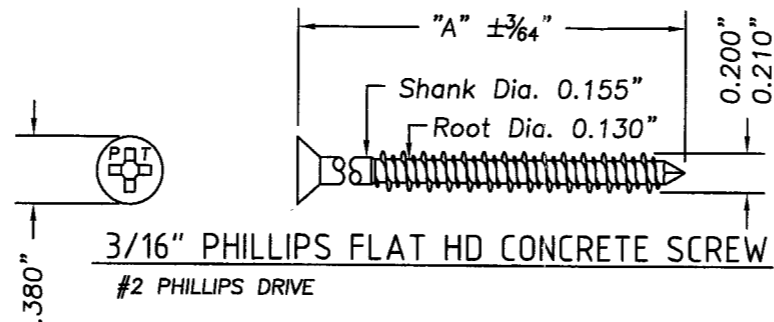
### GENERAL NOTES:

1. This product has been evaluated and is in compliance with the Florida Building Code 2004 Edition (2004 FBC) including the "High Velocity Hurricane Zone" (HVHZ).
2. Anchor installation shall be in accordance with the manufacturer's installation instructions, including pilot hole diameter and pilot hole depth clearance to the tip of the anchor.
3. Anchor embedment into the concrete shall exclude all side member materials, stucco, wall dressing and other wall coverings or cladding.
4. For allowable loads, see the allowable load tables contained in this drawing.
5. The Pro-Twist concrete screw is manufactured with an alternating high-low double thread form.
6. Allowable design loads for masonry were determined from testing conducted per ASTM E488-90.
7. Allowable shear design loads for wood are the lesser of values determined from testing conducted per ASTM E1761-90 and values determined per NDS-2001 utilizing  $L_s = .75$  and  $L_m = 1.5$ , both members of Southern Yellow Pine (specific gravity = 0.55). For job specific connections, use NDS 2001 procedures with the specific side member and main member material parameters to determine the connection capacity, but in no case shall the connection capacity be greater than the allowable load shown in this approval.
8. Allowable tensile (withdrawal) design loads for wood are the lesser of values determined from testing conducted per ASTM E1761-90 and values determined per NDS-2001 procedures with penetration = 1" into Southern Yellow Pine (specific gravity = 0.55). For job specific connections, use NDS 2001 procedures with the specific main member material parameters and screw penetration to determine the connection capacity, but in no case shall the connection capacity be greater than the allowable load shown in this approval.
9. The Pro-Twist concrete screw is manufactured using SAE 1018 or 1022 steel. For 1/4" concrete screws  $F_y = 58,104$  psi min. and  $F_u = 59,606.0$  psi min. For 3/16" concrete screws,  $F_y = 66,451$  psi min. and  $F_u = 66,488$  psi min.



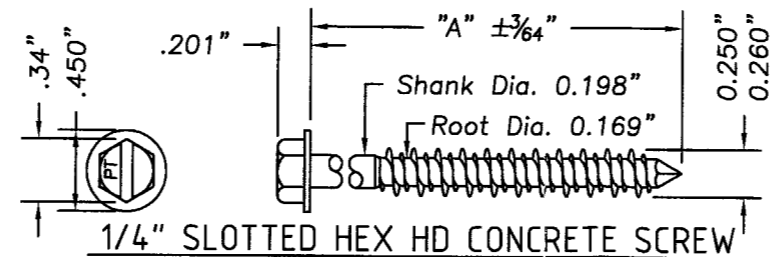
### ANCHOR DIMENSION

LENGTH	"A"
1-1/4"	1.250"
1-3/4"	1.750"
2-1/4"	2.250"



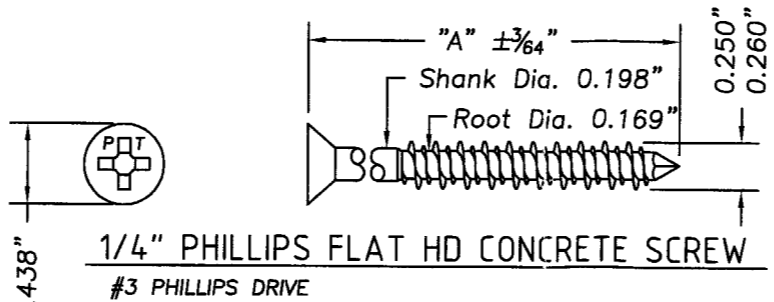
### ANCHOR DIMENSION

LENGTH	"A"
1-1/4"	1.250"
1-3/4"	1.750"
2-1/4"	2.250"



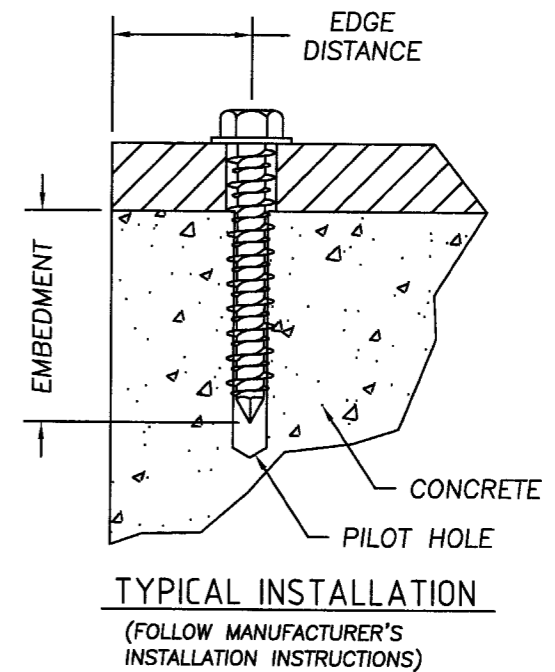
### ANCHOR DIMENSION

LENGTH	"A"
1-1/4"	1.250"
1-3/4"	1.750"
2-1/4"	2.250"

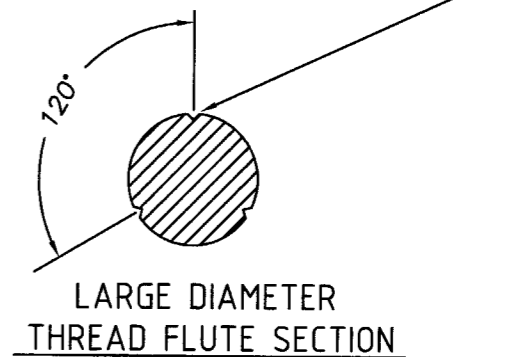


### ANCHOR DIMENSION

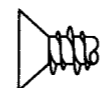
LENGTH	"A"
1-1/4"	1.250"
1-3/4"	1.750"
2-1/4"	2.250"



90° "V" NOTCH, 0.020" DEEP  
(3) 120° APART, SPIRAL LONGITUDINALLY UP THE FLUTES OF THE LARGE DIA. THREAD



PHILLIPS FLAT HD



SLOTTED HEX WASHER HD

### HEAD STYLES

Approved as complying with the Florida Building Code  
Date: 10/04/07  
By: 05-6526.03  
William Wade Product Control  
Division  
By: *[Signature]*

Documents Prepared By:

*RW*  
BUILDING CONSULTANTS, INC.  
P.O. Box 230 Valrico FL 33595  
Phone No.: 813.659.9197  
Florida Board of Professional Engineers  
Certificate of Authorization No. 9813  
*[Signature]* B-8-07  
Wendell W. Haney, P.E. NO. 54158

PRODUCT: PRO-TWIST CONCRETE SCREW ANCHORS  
PART OR ASSEMBLY: TYPICAL INSTAL. GEN'L NOTES AND DIMENSIONS

NO.	DATE	REVISIONS
2	8/3/07	Rev. per Dade letter
1	5/23/07	Rev. screw heading, sheet 2

DATE: 1-17-06  
SCALE: N.T.S.  
DWG. BY: WH  
CHK. BY: WWH  
DRAWING NO.: S-2624  
SHEET 1 OF 2



# PRIME SOURCE BUILDING PRODUCTS, INC.

## PRO-TWIST CONCRETE SCREWS ALLOWABLE DESIGN LOADS

### SUBSTRATE NOTES:

1. CONCRETE SHALL CONFORM TO AMERICAN CONCRETE INSTITUTE MANUAL OF CONCRETE PRACTICE ACI 301.
2. HOLLOW AND GROUT FILLED MASONRY BLOCK SHALL CONFORM TO ASTM C-90.
3. WOOD SHALL BE OF SPECIFIC GRAVITY .56 OR HIGHER.

### 3/16" DIAMETER CONCRETE SCREW

1. FOR 3/16" CONCRETE SCREWS, PILOT HOLE DIAMETER SHALL BE 5/32", DRILLED WITH CARBIDE MASONRY BITS FROM PRIME SOURCE (P/N's MB5312, MB5412 & MB5512) AND DRILLED 1/4" LONGER THAN THE REQUIRED EMBEDMENT.
2. ALLOWABLE LOADS BASED ON ULTIMATE LOAD DIVIDED BY A FACTOR OF SAFETY OF 4.
3. CENTER TO CENTER DISTANCE OF 3" MINIMUM IS REQUIRED.

### 1/4" DIAMETER CONCRETE SCREW

1. FOR 1/4" CONCRETE SCREWS, PILOT HOLE DIAMETER SHALL BE 3/16", DRILLED WITH CARBIDE MASONRY BITS FROM PRIME SOURCE (P/N's MB3312, MB3412 & MB3512) AND DRILLED 1/4" LONGER THAN THE REQUIRED EMBEDMENT.
2. ALLOWABLE LOADS BASED ON ULTIMATE LOAD DIVIDED BY A FACTOR OF SAFETY OF 4.
3. CENTER TO CENTER DISTANCE OF 4" MINIMUM IS REQUIRED.

### ALLOWABLE DESIGN LOADS

2000 PSI CONCRETE (TO ACI 301 SPECS)				
ANCHOR DIAMETER	EMBEDMENT	EDGE DISTANCE	ALLOW. TENSION (lbs)	ALLOW. SHEAR (lbs)
3/16"	1"	1-7/8"	131	234
	1-1/4"	1-7/8"	236	
	1-1/2"	1-7/8"	324	231
1/4"	1"	2-1/4"	132	262
	1-1/4"	2-1/2"	275	
	1-1/2"	2-1/4"	370	457

### ALLOWABLE DESIGN LOADS

3050 PSI CONCRETE (TO ACI 301 SPECS)				
ANCHOR DIAMETER	EMBEDMENT	EDGE DISTANCE	ALLOW. TENSION (lbs)	ALLOW. SHEAR (lbs)
3/16"	1"	1-7/8"	208	235
	1-1/4"	1-7/8"	364	
	1-1/2"	1-7/8"	396	230
1/4"	1"	2-1/4"	207	298
	1-1/4"	2-1/2"	432	
	1-1/2"	2-1/4"	569	464

### ALLOWABLE DESIGN LOADS

WOOD WITH SG = .56				
ANCHOR DIAMETER	EMBEDMENT	EDGE DISTANCE	ALLOW. TENSION (lbs)	ALLOW. SHEAR (lbs)
3/16"	1"	3/4"	201	
	1-1/4"	3/4"	251	
	1-1/2"	3/4"	338	138
	1-3/4"	3/4"	370	
1/4"	1"	3/4"	221	
	1-1/4"	3/4"	296	
	1-1/2"	3/4"	372	208
	1-3/4"	3/4"	463	

SEE NOTES 7 AND 8, SHEET 1.

### ALLOWABLE DESIGN LOADS

HOLLOW MASONRY BLOCK				
ANCHOR DIAMETER	EMBEDMENT	EDGE DISTANCE	ALLOW. TENSION (lbs)	ALLOW. SHEAR (lbs)
3/16"	1-1/4"	1-7/8"	211	233
	1-1/4"	15/16"	248	166
1/4"	1-1/4"	2-1/2"	387	454
	1-1/4"	1-1/4"	346	200

Documents Prepared By:  
**RW** BUILDING CONSULTANTS, INC.  
 P.O. Box 230 Valrico FL 33595  
 Phone No.: 813.659.9197  
 Florida Board of Professional Engineers  
 Certificate Of Authorization No. 9813  
*Wendell W. Haney, P.E.* 8-8-07  
 Wendell W. Haney, P.E. No. 54158

PRODUCT:  
 PRO-TWIST  
 CONCRETE SCREW ANCHORS  
 PART OR ASSEMBLY:  
 ALLOWABLE DESIGN LOADS

NO.	DATE	BY	WH
2	8/3/07	Rev. per Date letter	WH
1	5/23/07	Rev. screw heading, sheet 2	WH

DATE: 1-17-06  
 SCALE: N.T.S.  
 DWG. BY: WH  
 CHK. BY: WWH  
 DRAWING NO.: S-2624  
 SHEET 2 OF 2

Approved as complying with the Florida Building Code  
 Date: 10/04/07  
 NO. 05-0526.03  
 Initial Date Review Concept  
 Division  
 By: *[Signature]*